

# AURORA

**A NEWSLETTER OF THE NORTHERN LIGHTS CAMPS' ALUMNI ASSOCIATION**

**WINTER, 2000**

**VOLUME 2 NUMBER 1**

## **Brad Olson 2000 Summer Camp Director**



Brad began his Scouting career about 18 years ago when he joined Tiger Cubs and has been involved ever since. In 1992, he earned his Eagle Scout award while a member of Troop 229, Fargo, ND. He has been to Philmont for leadership training, attended the 1993 National Jamboree and was involved in JLT for three years.

Brad has been working at Camp Wilderness for the past ten years. He started as a CIT in 1991, an Intern in 1992, Waterfront Aide from 93-95, Assistant Waterfront Director in 1996 and served as the Camp's Program Director from 1997-1999. Brad has also been employed at Happy Joe's Pizza for the past six years and is currently a Supervisor with the company.

He will graduate from North Dakota State University, Fargo, ND, this spring with a major in Business Administration. He is currently the NDSU Student Body President and has been involved in Student Government for the past four years.

Be sure to stop by when you are at Camp this summer and say hi to Brad. You will be glad you did!

## **REUNION WEEK**

A new tradition has been building the past few years at Camp Wilderness during the July 4th camp session. What is this new tradition? Well, I will tell you. Camp staff alumni have been crawling out of the woodwork to volunteer a week of service to camp. Reunion Week, as it is being called, is a great opportunity to re-live the golden years of being a camp staff member. Alumni staff members are helping out in all areas of camp as commissioners, counselors, quartermasters, dishwashers, beach staff, high adventure staff, etc. Reunion week is a great time to be at camp due to the amount of Alumni staff in camp and the Camp Open House. Not to mention that the paid staff appreciate the extra hands.

So plan your vacations for this years reunion week (July 2 - July 8). Make sure you call ahead to the camp director and don't forget your physical.

See you Reunion Week,

Submitted by Chris Soper

Editor's Note: Camp Director Brad Olson can be contacted by calling the Fargo Scout office at 1-877-293-5011.

## **AURORA DEADLINES**

**May 1- Articles Due**  
**May 25- Aurora Mailed**

**November 1 - Articles Due**  
**November 27 - Aurora Mailed**

**If possible, e-mail your articles to Ron as a Word attachment, otherwise send us a hard copy.**

Schneids@worldnet.att.net

or

Ron Schneider  
1608 South 17<sup>th</sup> Street  
Moorhead, MN 56560  
218 236-5072 Home Phone

## **Mark your calendars!**

**Camp Wilderness Spring Cleaning  
and  
Work Weekend**

**May 5 - 7, 2000**

Last year, over 300 Scouts and adults attended the work weekend. Dozens of projects were completed and the fellowship was incredible. Plan to join us this spring. Once again, we plan to have an Alumni Association meeting as a part of the work weekend.

## **Capital Campaign Update**

The capital campaign for Camp Wilderness continues to grow steadily. Phases one, two and three are completed and the final phase, phase four is well under way. To date, \$ 1,027,649.00 has been raised. Thanks to all that have helped out. If you would like more information about the campaign, please contact Ron Schneider at the address listed below.

## **Is it Reunion Time?**

A few people have expressed an interested in having a reunion weekend of the membership. We would need some folks to step forward and agree to chair such an event. If you are interested in helping out with a reunion, contact either Chad Swenson or Ron Schneider.

The *Aurora* is the official publication of the Northern Lights Camps' Alumni Association, 301 South 7<sup>th</sup> Street, Fargo, ND, 58103. It is published three times per year. The purpose of the Association is: to preserve and promote the camping opportunities at our council camps, to inform the membership of the camps current progress, to provide support for the current operations with our time, talents and assets, and to organize gatherings of the association. Membership is open to all past camp staff members, campers or anyone with an interest in the camps. Association dues are \$ 15.00 per year for annual membership, \$ 25.00 or more Sustaining memberships or \$ 150.00 (one time) Life Memberships. The Association's dues year begins June 1. Send any comments, article ideas or questions to Ron Schneider, 1608 South 17<sup>th</sup> Street, Moorhead, MN, 56560, call 218 236-5072.

## MISSING - A FEW CAMP DIRECTORS

Can you help us out- we are missing a few of the names of our former Camp Wilderness Camp Directors? If you know their names, drop us a note at the address on the back page of this newsletter. Thanks.

1945 Virgil Reed, Fargo, ND  
1946 Reed  
1947 Reed  
1948 Reed  
1950 Milford Johnson, Alexandria, MN  
1951 to 1960 ?  
1961 Larry Lundhom, Fergus Falls, MN  
1962?  
1963 John Barton, Fergus Falls, MN  
1964 Chuck Lewis Hayden, ?  
1965 Dr. Roy Kulland, West Fargo, ND  
1966 to 1968?  
1969 Paul Stark, Fargo, ND  
1970 and 71?  
1972 Doug McDowell, Fargo, ND  
1973 Orille Knapp, Alexandria, MN: Mike Potter, Valley City, ND: Lee?, Jamestown, ND: Steve Poole, Fargo, ND: Forster Davis, Fargo, ND:  
(These were all Red River Valley Council executives who took turns acting as Camp Director that summer)  
1974 Forster Davis, Fargo, ND  
1975 Dennis Krzyzaniak, Moorhead, MN  
1976 Mike Murphy, Fargo, ND  
1977 Matt Coad, Fargo, ND  
1978 Gordon Przybylski, Thief River Falls, MN  
1979 Przybylski  
1980 Lanny Moore, Grand Forks, ND  
1981 Myron Rosebrook, Fargo, ND  
1982 Tom Przybylski, Thief River Falls, MN  
1983 James King, Fargo, ND  
1984 Tom Przybylski, Thief River Falls, MN  
1985 Larry Dolan, Jamestown, ND  
1986 Tom Mulhern, Grand Forks, ND  
1987 Steve Werpy, Ada, MN  
1988 Werpy  
1989 Werpy  
1990 Bill Pribula, Milnor, ND  
1991 Pribula  
1992 Matt Hollifield, Grand Forks, ND  
1993 Steve Fisher, Thief River Falls, MN  
1994 Ed Janzen, Fargo, ND  
1995 Curt Jendro, Grand Forks, ND (two weeks) Aaron Hass, Fargo, ND  
1996 Byron Clark, Fargo, ND  
1997 Kristen Vasicek, Grand Forks, ND  
1998 Kristen Vasicek  
1999 Kristen Votova  
2000 Brad Olson, Fargo, ND

This article first appeared in the Hilites and is reprinted with permission. Parts of the article were edited due to space concerns.

## **Camp Wilderness Stewardship**

By John S. Feick

The forest at camp is made up primarily of Aspen, Jack Pine, and Birch. White Pine, Red Pine, Oak, Spruce and a few Maples make up most of the remaining tree species. The species that make up the majority of our forest (Aspen, Jack Pine and Birch) all have about the same life span as people do. Some trees will begin to die early in life, but most will live to be 60 to 70 years old and then the majority will die. At camp this die off began several years ago.

Foresters have made it clear that if Wilderness is going to maintain a healthy and diverse forest, additional timbering needs to happen and soon! The alternative can already be seen in several areas of camp where the die off is more advanced. Hazelnut bush begins to choke out everything else and the woods become quite open with very little canopy.

If an Aspen tree is cut while it is still healthy, a chemical reaction occurs within the remaining stump and root system. This causes a signal to be sent to the roots to sprout or sucker new trees. Each tree will send up hundreds of new trees every direction from the stump. Ground temperature also plays a major role in this regeneration process. If the canopy of the forest is removed (the trees are cut down) it allows the sun to shine on the soil and warm it enough to trigger the roots to sprout. This is how the camp's current forest was created. The mature canopy was eliminated by either fire or timbering. If the canopy is not cut down and the ground is shaded, the roots will only sprout a few trees and even fewer of these will grow to maturity. The end result will be a very open forest with thick Hazelnut underbrush.

The stands of Jack Pine that began to grow after a fire long ago are also over mature. Scott Burns, a forester employed by Potlatch, commented that, "we will be lucky to have any living Jack Pines at camp in three years". Looking at the number of Jack Pines that have already died, it is easy to believe his prediction.

Jack Pine is regenerated through fire. There are millions and millions of Jack Pine seeds all over Camp Wilderness. However, due to a heavy seed shell, it takes a fire to crack the shell and allow the seeds to sprout. In order to get Jack Pine regeneration a fire will need to be set and an area burned off. Due to the possibility of this fire getting out of control, this has not been an acceptable method of regeneration. In areas where heavy concentrations of Jack Pine exist, White or Red Pine will be hand planted after the Jack Pine is cut.

White Pine, Norway or Red Pine, Oak and Maple species all have a longer life and are reserved when any cutting is done. In many areas of camp, timber harvests will be designed to use these existing species as screens to reduce the visual impact of the cuts.

Numerous plantations are located throughout camp. Most of these are Norway or Red Pine. All of the plantations are doing well, where needed; thinning will be completed in conjunction with other cutting being done.

Editor's note: The council has signed a logging contract with Potlatch. It is expected that logging will begin this winter and will continue in phases over the next three years. It is further expected that after this logging project has been completed, another project will begin. The income from the current logging operation will be placed in the Camp Wilderness Capital Campaign Fund.

# So where is ole what's his/her name now?

Lee Christianson, Wilderness staff, 55, 56, 58, 59, 60 can be e-mailed at--  
dlchrist@worldnet.att.net

Ernie Harlow is at the Good Samaritan Center, 301 S Hwy 12B, Park River, ND. 58270 Phone 701-284-7432. Ernie continues to recover from his stroke. It will be a while before he is able to go home. I am sure he would like to hear from fellow Scouters

Cal Jensen, the owner of the Emmaville Store, died on December 30, 1999. Cal had been battling cancer.

## Camp Wilderness Stewardship

By John S. Feick

This is the third in a series of articles on stewardship issues at Wilderness. The November and December articles covered how the forest developed from the late 1920's and early 1930's when most of Wilderness was logged and some of it was burned. All of this occurred prior to the camp lands being purchased by the Boy Scouts. The December article dealt with the make up of the forest and how to regenerate the tree species at camp.

Having watched the forest age, especially over the last three years, it's clear that we need to begin regenerating our forest. To do this properly it is important to involve a forester that can plan and manage this process. To obtain this service, the Council has entered into a timber sale contract with Potlatch. This company is a large buyer of timber and employs foresters to manage their timberlands.

These foresters also set up timber sales with private landowners. As part of the sale, Potlatch will oversee and manage the loggers doing the cutting. The Potlatch forester will also work with the Council to set up and oversee replanting where needed. This service will be provided free of charge. The cost of obtaining this same service through the DNR or private forester is between 10 and 13 percent of the timber cut.

Scott Burns is the forester that is laying out the timber cuts at camp. He has already spent a good deal of time explaining why certain areas need to be cut and how he is attempting to minimize the visual impact. If you have an opportunity to visit camp, make sure you take time to look at the flagged area that runs north and south between the ranger's house and Iowa campsite.

This strip runs north past North Star campsite to the Green trail. It will be cut before spring and it is probably the most visible cut that will occur on the property. Where possible, Scott is attempting to use existing tree species like Pine and Spruce to screen areas being cut. This particular area is almost all Aspen and has very little diversity of tree species. There is no real good way to screen the work being done although Scott did his best to meet our goals and still do what is needed.

You may also see flags marking small pockets of Aspen and Jack Pine to be cut along the road into camp. These areas will regenerate into thick stands of Aspen and create a living screen to hide timbering farther away from the road. The Jack Pine stands will probably need to be replanted. A decision on this will be made once the Aspens have sprouted and the area can be assessed.

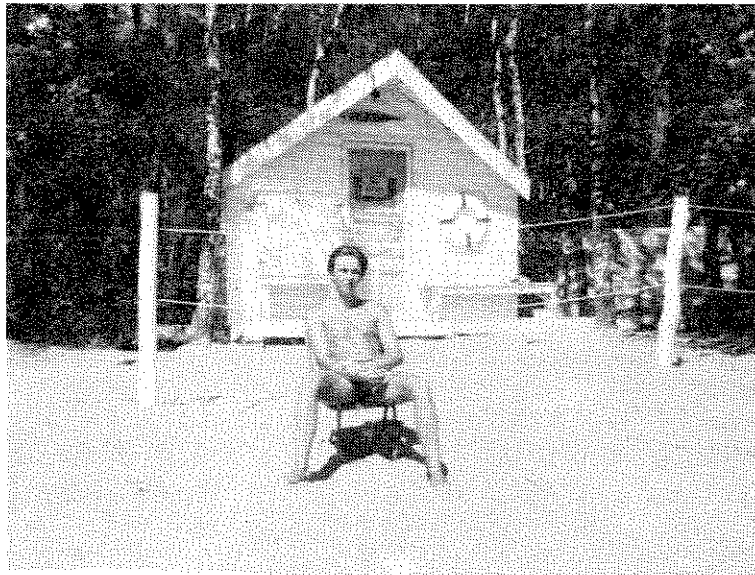
Timber cutting at camp is done using the following as a basis for decision making. They are listed in order of importance to the Council and the Potlatch forester is well aware of them:

- The first priority is to enhance the property for use as a Boy Scout camp.
- The property should be managed to provide a variety of wildlife habitats.
- Good conservation practices must be followed at all times.
- Income is the lowest priority in setting up a timber sale.

For additional information on managing timber and wildlife, you can go to [WWW.nlcbsa.org/wildernp.html](http://WWW.nlcbsa.org/wildernp.html).

There you will find an article by Al Wickman, titled "Wildlife and the Weed Tree". Al is the DNR forester that created the original Forest Management plan for Camp Wilderness. Much of what we now enjoy at camp was done with Al's advice. This article was written in 1985 when timber demand and prices were very low compared to today. Since this article was written the demand for Aspen has exploded and we are enjoying a very healthy market. In 1985 a cord of Aspen sold for about \$3.50, today the same cord sells for \$28.00. Although the economics of cutting timber have changed since 1985, the basic information in this article remains true today.

# A blast from the past!



In the last issue of the AURORA we featured this picture of a young man in front of the Sugar Shack at Camp Wilderness. That building was destroyed by a tornado in 69 or 70. We still are not sure who the guy in the picture is, we need your help. The guesses so far include: Scott Albertson, Tom Schermeister, Shawn Murphy and Joel Gatarmson. We do know it is not Shawn.

Send your answers to the address listed below.

Northern Lights Camps' Alumni Association  
301 South 7<sup>th</sup> Street  
Fargo, ND 58103

PRESORTED  
FIRST CLASS



Chris Soper  
9121 Constance  
Lenexa, KS 66215